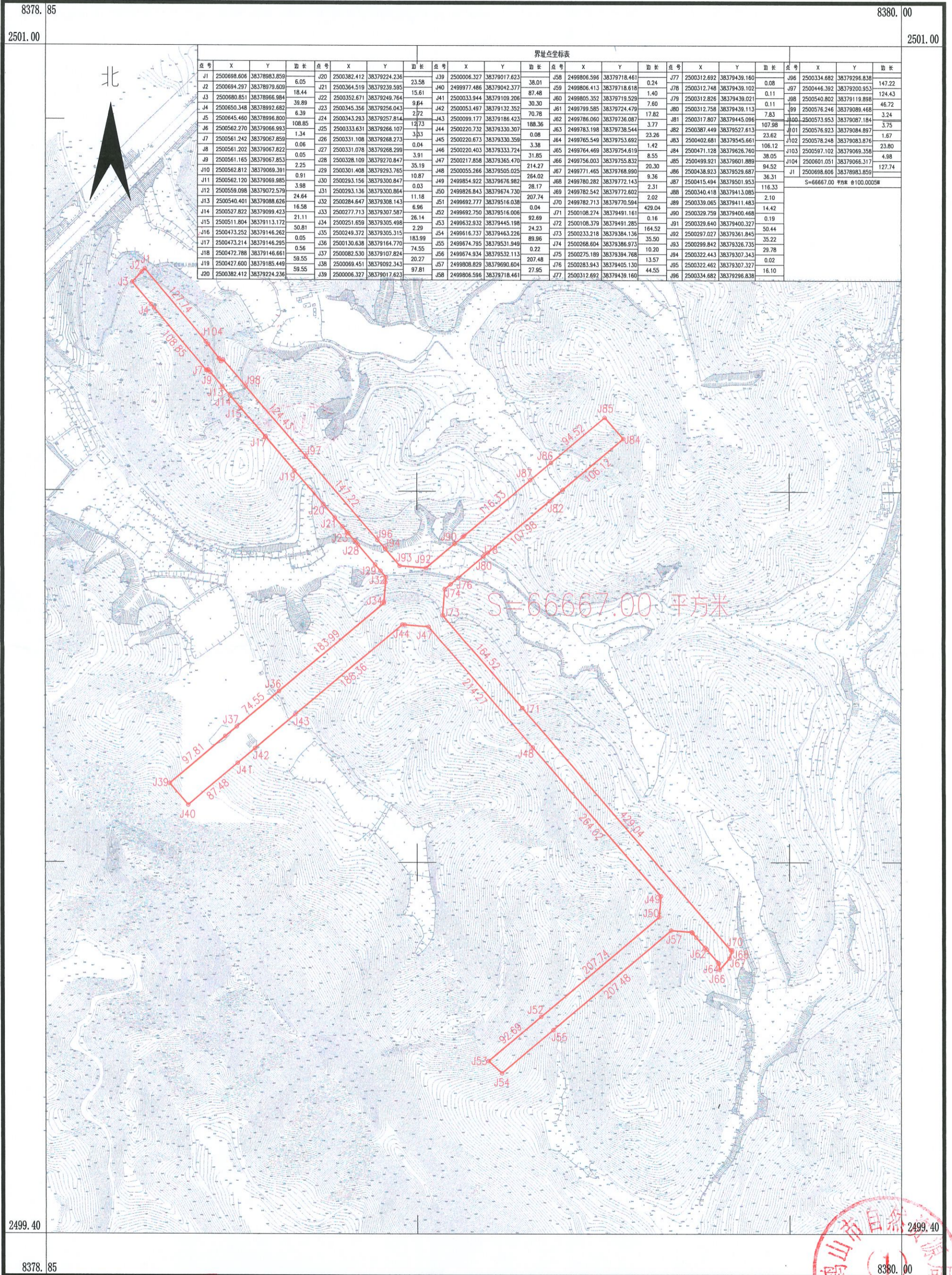


鹤山市2022年度第十二批次城镇建设用地图(HC637)

鹤山市鹤城镇东坑村委会

单位: m.m²



界址点坐标表																							
点号	X	Y	边长	点号	X	Y	边长	点号	X	Y	边长	点号	X	Y	边长	点号	X	Y	边长	点号	X	Y	边长
J1	2500698.606	38378983.859	6.05	J20	2500382.412	38379224.236	23.58	J39	2500006.327	38379017.623	38.01	J58	2499806.596	38379718.461	0.24	J77	2500312.692	38379439.160	0.08	J96	2500334.682	38379296.838	147.22
J2	2500694.297	38378979.609	18.44	J21	2500364.519	38379239.595	15.61	J40	2499977.486	38379042.377	87.48	J59	2499806.413	38379718.618	1.40	J78	2500312.748	38379439.102	0.11	J97	2500446.392	38379200.953	124.43
J3	2500680.851	38378966.984	39.89	J22	2500352.671	38379249.764	9.84	J41	2500033.944	38379109.206	30.30	J60	2499805.352	38379719.529	7.60	J79	2500312.826	38379439.021	0.11	J98	2500540.802	38379119.898	46.72
J4	2500650.348	38378992.682	6.39	J23	2500345.356	38379256.043	2.72	J42	2500053.497	38379132.352	70.78	J61	2499799.585	38379724.479	17.82	J80	2500312.758	38379439.113	7.83	J99	2500576.246	38379089.468	3.24
J5	2500645.460	38378996.800	108.85	J24	2500343.293	38379257.814	12.73	J43	2500099.177	38379186.423	188.36	J62	2499786.060	38379736.087	3.77	J81	2500317.807	38379445.096	107.98	J100	2500573.953	38379087.184	3.75
J6	2500562.270	38379066.993	1.34	J25	2500333.631	38379266.107	3.03	J44	2500220.732	38379330.307	0.08	J63	2499783.198	38379738.544	23.26	J82	2500387.449	38379527.613	23.62	J101	2500576.923	38379084.897	1.67
J7	2500561.242	38379067.859	0.06	J26	2500331.108	38379268.273	0.04	J45	2500220.673	38379330.359	3.38	J64	2499765.549	38379753.692	1.42	J83	2500402.681	38379545.661	106.12	J102	2500578.248	38379083.876	23.80
J8	2500561.202	38379067.822	0.05	J27	2500331.078	38379268.299	3.91	J46	2500220.403	38379333.724	31.85	J65	2499764.469	38379754.619	8.55	J84	2500471.128	38379626.760	38.05	J103	2500587.102	38379069.358	4.98
J9	2500561.165	38379067.853	2.25	J28	2500328.109	38379270.847	35.19	J47	2500217.858	38379365.470	214.27	J66	2499756.003	38379755.832	20.30	J85	2500499.921	38379601.889	94.52	J104	2500601.051	38379066.317	127.74
J10	2500562.120	38379069.391	0.91	J29	2500301.408	38379283.765	10.87	J48	2500055.266	38379505.025	264.02	J67	2499771.465	38379768.990	9.36	J86	2500438.923	38379529.687	36.31	J105	2500698.806	38378983.859	127.74
J11	2500562.120	38379069.391	0.91	J30	2500293.156	38379300.847	0.03	J49	2499854.922	38379676.982	28.17	J68	2499780.282	38379772.143	2.31	J87	2500415.494	38379501.953	116.33	J106	2500698.806	38378983.859	127.74
J12	2500558.098	38379072.579	24.64	J31	2500293.136	38379300.864	11.18	J50	2499826.843	38379674.730	207.74	J69	2499782.542	38379772.602	2.02	J88	2500340.418	38379413.085	2.10	J107	2500698.806	38378983.859	127.74
J13	2500540.401	38379088.626	16.58	J32	2500284.647	38379308.143	6.96	J51	2499692.777	38379516.038	92.69	J70	2499782.713	38379770.594	429.04	J89	2500339.065	38379411.483	14.42	J108	2500698.806	38378983.859	127.74
J14	2500527.822	38379099.423	21.11	J33	2500277.713	38379307.587	26.14	J52	2499692.750	38379516.006	24.23	J71	2500108.274	38379491.161	164.52	J90	2500329.759	38379400.468	50.44	J109	2500698.806	38378983.859	127.74
J15	2500511.804	38379113.172	50.81	J34	2500251.659	38379305.498	2.29	J53	2499632.932	38379445.198	89.96	J72	2500108.379	38379491.285	35.50	J91	2500329.640	38379400.327	50.44	J110	2500698.806	38378983.859	127.74
J16	2500473.252	38379146.262	0.05	J35	2500249.372	38379305.315	183.99	J54	2499616.737	38379463.226	0.22	J73	2500233.218	38379384.136	10.20	J92	2500297.027	38379361.845	35.22	J111	2500698.806	38378983.859	127.74
J17	2500473.214	38379146.295	0.56	J36	2500130.638	38379164.770	74.55	J55	2499674.795	38379531.949	207.48	J74	2500268.604	38379386.973	13.57	J93	2500299.842	38379326.735	29.78	J112	2500698.806	38378983.859	127.74
J18	2500472.788	38379146.661	59.55	J37	2500082.530	38379107.824	20.27	J56	2499674.934	38379532.113	207.48	J75	2500275.189	38379394.768	13.57	J94	2500322.443	38379307.343	0.02	J113	2500698.806	38378983.859	127.74
J19	2500427.600	38379185.449	59.55	J38	2500069.451	38379092.343	97.81	J57	2499806.829	38379690.604	27.95	J76	2500283.943	38379405.130	44.55	J95	2500322.462	38379307.327	16.10	J114	2500698.806	38378983.859	127.74
J20	2500382.412	38379224.236		J39	2500006.327	38379017.623		J58	2499806.596	38379718.461		J77	2500312.692	38379439.160		J96	2500334.682	38379296.838		J115	2500698.806	38378983.859	127.74

S=66667.00 平方米

鹤山市山水测绘有限公司



2022年6月数字测绘有限公司
2000国家大地坐标系: 中央子午线114度
1985国家高程基准, 等高距为1米
证书编号: 乙测资字 44500859

1:5000

绘图员: 朱楚怡
检查员: 周军
审核员: 周泳锋