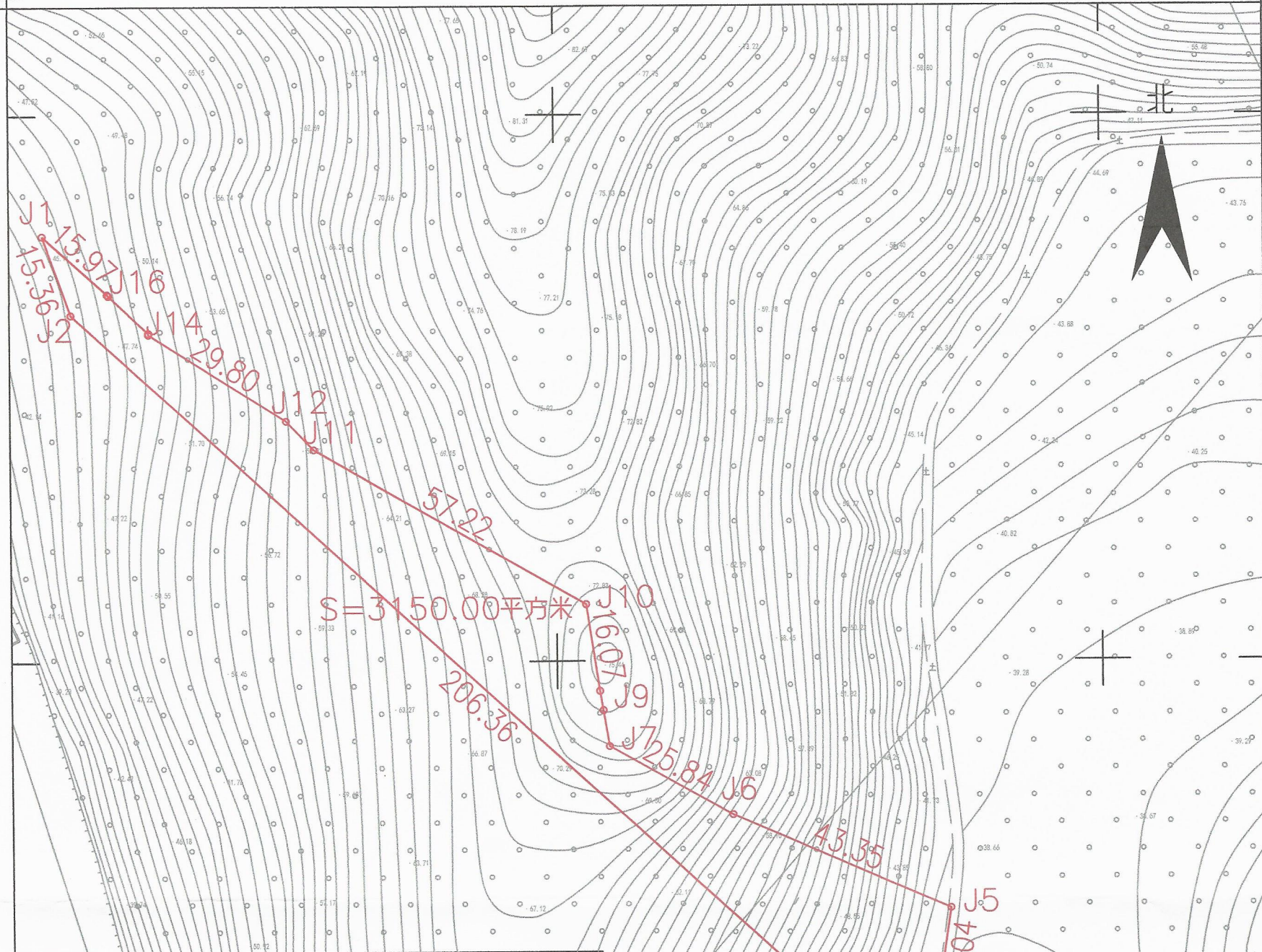


鹤山市2020年度第二十七批次城镇建设用地图勘测定界图 (ZS383)

鹤山市址山镇竹场

单位: m.m²

38371.200 38371.430
2494.620 2494.620



界址点坐标表

点号	X	Y	边长
J1	2494578.033	38371206.109	15.36
J2	2494563.589	38371211.334	206.36
J3	2494424.641	38371363.911	14.12
J4	2494437.731	38371369.197	17.04
J5	2494454.570	38371371.817	43.35
J6	2494471.819	38371332.043	25.84
J7	2494484.475	38371309.513	6.66
J8	2494491.045	38371308.402	3.55
J9	2494494.546	38371307.811	16.07
J10	2494510.433	38371305.399	57.22
J11	2494538.791	38371255.699	7.28
J12	2494544.048	38371250.671	29.80
J13	2494560.048	38371225.528	0.23
J14	2494560.277	38371225.528	10.03
J15	2494567.134	38371218.213	0.32
J16	2494567.363	38371217.985	15.97
J1	2494578.033	38371206.109	

2494.300 S=3150.00 平方米 合4.7250亩

鹤山市山水测绘有限公司



2020年12月数字化制图
鹤山市山水测绘有限公司
2000国家大地坐标系, 中央子午线114度
1985国家高程基准, 等高距为1米
2007图式编号: 丙测资字4424251

1:1000

绘图员: 姜立转
检查员: 周军
审核员: 周泳锋

38371.200

38371.430

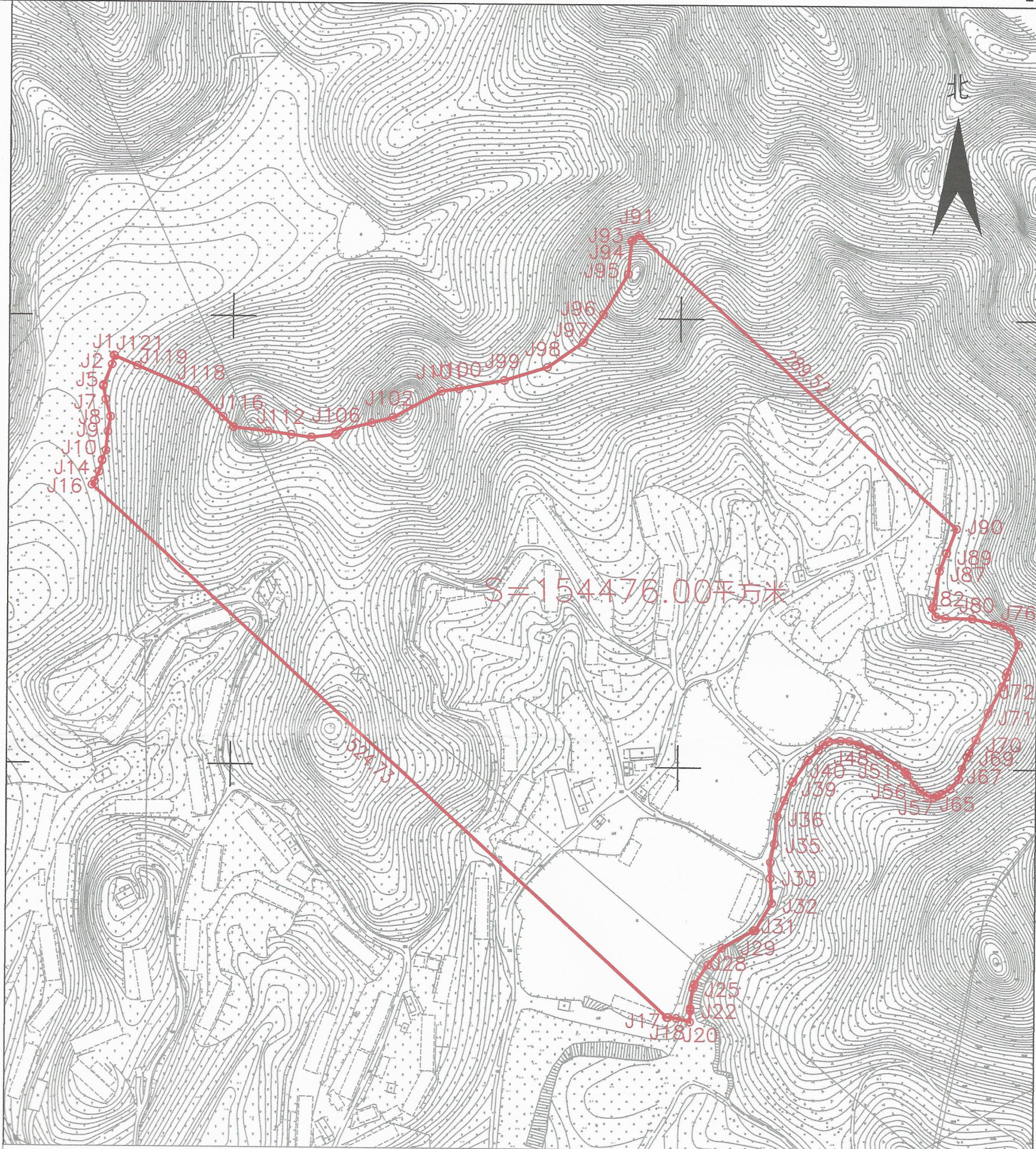
鹤山市2020年度第二十七批次城镇建设用地图勘测定界图 (ZS384)

鹤山市址山镇竹场

单位: m.m²

38372.040
2494.710

北



S=154476.00平方米

界址点坐标表				界址点坐标表				界址点坐标表				界址点坐标表				界址点坐标表				界址点坐标表											
点号	X	Y	距离	点号	X	Y	距离	点号	X	Y	距离	点号	X	Y	距离	点号	X	Y	距离	点号	X	Y	距离	点号	X	Y	距离				
J1	2494472.935	38371420.147	6.22	J20	2494030.117	38371809.361	0.00	J39	2494191.053	38371876.888	0.56	J57	2494186.018	38371962.478	0.14	J76	2494294.564	38372022.333	5.74	J94	2494552.013	38371766.589	22.22	J113	2494423.088	38371523.838	23.21				
J2	2494466.810	38371419.066	14.95	J21	2494037.498	38371809.682	0.23	J40	2494205.967	38371887.464	9.64	J58	2494186.018	38371962.620	5.80	J77	2494297.129	38372017.203	5.62	J95	2494529.884	38371764.485	31.78	J114	2494425.628	38371500.770	0.21				
J3	2494452.997	38371413.344	0.11	J22	2494037.728	38371809.892	1.44	J41	2494212.794	38371894.268	4.82	J59	2494182.767	38371967.426	4.84	J78	2494297.985	38372011.546	15.13	J96	2494502.724	38371747.971	22.91	J115	2494425.840	38371500.770	0.21				
J4	2494432.895	38371413.301	0.13	J23	2494039.167	38371809.755	13.43	J42	2494216.427	38371897.438	3.80	J60	2494181.494	38371972.092	2.33	J79	2494301.357	38371996.691	0.21	J97	2494494.079	38371734.652	28.42	J116	2494425.840	38371500.558	9.73				
J5	2494452.767	38371413.263	0.57	J24	2494052.486	38371811.463	2.35	J43	2494218.299	38371900.745	0.68	J61	2494182.371	38371974.253	0.27	J80	2494301.405	38371996.683	0.16	J98	2494467.031	38371710.679	30.16	J117	2494432.612	38371493.574	25.41				
J6	2494452.224	38371413.101	8.96	J25	2494054.706	38371812.219	0.62	J44	2494218.636	38371901.340	0.10	J62	2494182.471	38371974.500	3.04	J81	2494301.407	38371996.518	17.68	J99	2494457.975	38371681.912	30.16	J118	2494449.573	38371474.856	42.14				
J7	2494443.419	38371414.778	11.81	J26	2494055.258	38371812.502	15.57	J45	2494218.641	38371901.443	7.66	J63	2494183.615	38371977.322	0.28	J82	2494301.626	38371978.843	6.61	J100	2494452.115	38371651.546	11.83	J119	2494466.031	38371435.861	0.05				
J8	2494432.098	38371418.133	10.20	J27	2494068.210	38371821.137	24.24	J46	2494219.005	38371909.090	5.85	J64	2494183.898	38371977.322	6.35	J83	2494302.759	38371972.327	0.43	J101	2494450.517	38371639.826	36.95	J120	2494466.051	38371435.813	16.57				
J9	2494422.035	38371416.456	12.64	J28	2494079.591	38371830.556	14.77	J47	2494218.828	38371914.940	6.85	J65	2494187.291	38371982.694	8.71	J84	2494308.672	38371969.750	0.43	J102	2494432.936	38371607.329	14.58	J121	2494472.522	38371420.559	0.58				
J10	2494409.456	38371415.198	6.77	J29	2494091.365	38371851.749	0.86	J48	2494216.879	38371921.510	0.10	J66	2494193.851	38371988.422	7.13	J85	2494308.672	38371970.177	0.43	J103	2494429.306	38371593.211	22.40	J1	2494472.935	38371420.147	0.58				
J11	2494403.166	38371412.682	0.42	J30	2494091.803	38371852.577	0.38	J49	2494216.837	38371921.601	7.91	J67	2494200.673	38371990.484	8.67	J86	2494309.100	38371970.177	24.32	J104	2494423.728	38371571.517	3.51								
J12	2494402.747	38371412.682	0.17	J31	2494091.758	38371852.927	21.16	J50	2494213.512	38371928.780	7.30	J68	2494208.665	38371993.849	3.02	J87	2494333.040	38371974.452	12.71	J105	2494420.972	38371569.342	0.21								
J13	2494402.587	38371412.638	7.67	J32	2494109.999	38371863.644	16.63	J51	2494209.968	38371935.160	13.69	J69	2494211.342	38371995.241	10.08	J88	2494344.837	38371979.171	0.25	J106	2494420.972	38371569.130	0.21								
J14	2494395.199	38371410.585	6.94	J33	2494126.589	38371862.547	10.70	J52	2494202.880	38371946.870	6.93	J70	2494220.272	38371999.910	19.68	J89	2494345.066	38371979.263	17.34	J107	2494420.972	38371568.918	0.15								
J15	2494388.910	38371407.650	3.07	J34	2494137.285	38371862.739	12.39	J53	2494198.679	38371952.380	0.68	J71	2494238.338	38372007.723	19.99	J90	2494361.164	38371985.702	289.52	J108	2494421.051	38371568.788	0.16								
J16	2494386.323	38371405.988	524.73	J35	2494149.451	38371865.083	18.55	J54	2494198.123	38371952.767	1.66	J72	2494255.916	38372017.244	7.12	J91	2494556.101	38371771.645	0.00	J109	2494421.184	38371568.707	15.78								
J17	2494033.013	38371793.953	0.96	J36	2494167.897	38371867.056	11.96	J55	2494196.763	38371953.714	8.04	J73	2494262.508	38372019.929	3.26	J92	2494552.515	38371767.070	5.81	J110	2494419.279	38371553.045	0.21								
J18	2494033.012	38371794.913	5.51	J37	2494178.887	38371871.785	13.19	J56	2494190.118	38371958.237	5.90	J74	2494265.681	38372020.662	19.98	J93	2494552.147	38371766.601	0.13	J111	2494419.279	38371552.834	13.65								
J19	2494032.461	38371800.391	9.27	J38	2494191.053	38371876.888	0.56	J57	2494186.018	38371962.478	11.67	J75	2494284.304	38372027.891	11.67	J94	2494552.013	38371766.589	0.13	J112	2494420.972	38371539.289	13.65								
J20	2494030.117	38371809.361	0.00																												



鹤山市山水测绘有限公司

2020年12月
鹤山市山水测绘有限公司
2000国家大地坐标系, 中央子午线114度
1985国家高程基准, 等高距1米
2007年编号: 丙测资字4424251

1:3000

38372.040

绘图员: 姜立转
检查员: 周军
审核员: 周泳锋